

Crowne Plaza

back at the heart of the city

Conferences

DEFINITELY The Place to Meet in Birmingham

- Our brand new and purpose built Conference floor consists of 11 Conference and Event rooms, accommodating from 10 to 300 delegates. All rooms benefit from natural daylight and state of the art technology; including Wi-Fi. The Conference area has its own Reception that will be manned from 8am – 6pm.

The Vista Suite has extensive Reception and Exhibition facilities plus a Private Bar. It can accommodate 300 delegates theatre style or 180 guests for Private Dining.

For smaller meetings, we have 3 Executive Boardrooms each with a large screen TV and 7 stylish Training Rooms all with a complimentary LCD Projector & Screen or an Intergrated presentation solution.

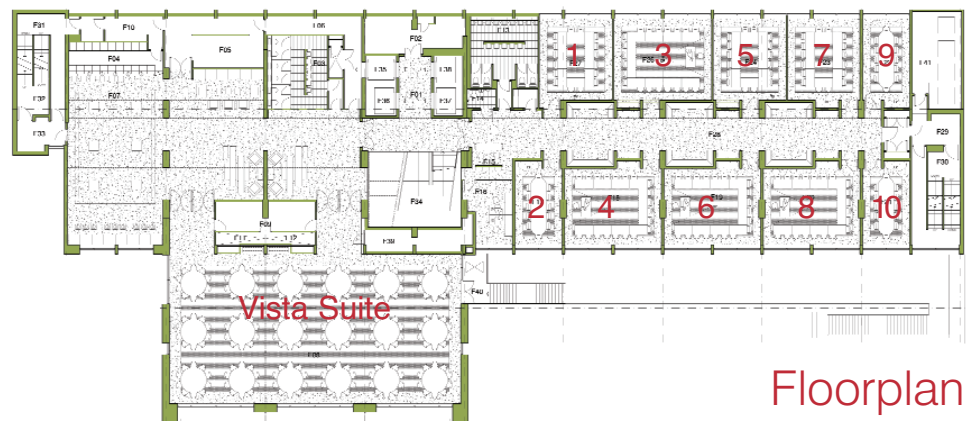
- The Vista Suite is ideal for Corporate and Social Events including Conferences, Dinners, Dinner Dances, Small Exhibitions and Weddings.
- We believe in one person contact; where the person who receives your enquiry at the initial stage will see it through to your actual meeting.
- Competitive Day Delegate and 24hr Delegate Conference packages.



- 312 newly refurbished bedrooms, 2 superb Club Bedroom floors complete with a Private Club Lounge with a dedicated Host and Media Centre.
- Daily 'Meet & Greet' Service with a full Event briefing on arrival to ensure your day is a total success. Upon departure a full event debrief will be held to establish your level of satisfaction and that your requirements were met.

Capacities

ROOM	Reception	Theatre	Classroom	U shape	Boardroom	Banquet	Cabaret	Dimension (M)	Height (M)	Door H/W	Floor
Vista Suite	300	300	150	0	0	190	120	11.43 x 22.86	3	2.1 x 2.1	1
Vista 1	150	200	80	50	40	120	80	15.24 x 11.43	3	2.1 x 2.1	1
Vista 2	70	60	35	28	30	50	32	11.43 x 7.76	3	2.1 x 2.1	1
Executive 2	0	0	0	0	10	0	0	3.66 x 5.80	3.5	2.0 x .91	1
Executive 9	0	0	0	0	10	0	0	3.66 x 5.80	2.9	2.0 x .91	1
Executive 10	0	0	0	0	10	0	0	3.66 x 5.80	2.9	2.0 x .91	1
Room 1,7	0	0	12	12	15	0	0	6.0 x 5.5	3.5	2.0 x 0.91	1
Room 3,4,6,8	0	0	18	16	18	0	20 (Rm3)	5.70 x 7.00	3.5	2.0 x 0.91	1
Room 5	0	0	12	12	15	0	0	6.00 x 5.26	3.5	2.0 x 0.91	1
Private Dining Room	0	0	0	0	0	18	0	-	-	-	GF



Floorplan



For further information, or to arrange a meeting to discuss your needs, call the Meeting Success Office on **0870 400 9150**. Alternatively, visit our new website: www.crowneplazabirmingham.com or email meetings@CPBhamCity.com

We look forward to welcoming you to the brand new Crowne Plaza Birmingham City Centre.